



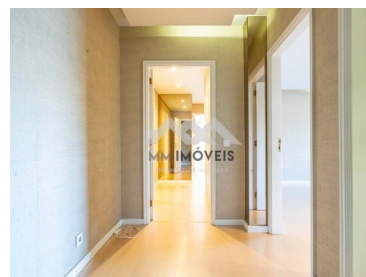
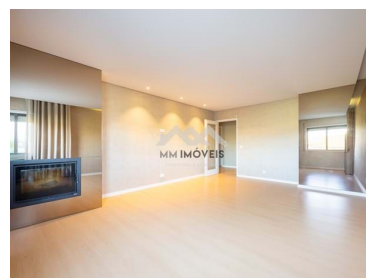
MM403/24ALF/VSI

Reference

Scan the QR code to view the property



## Alfena - Apartment



2

Bedrooms



1

Bathrooms



109

Area (m²)



Garage

**197 500 €**

(EUR €)

## 2 Bedroom Apartment | Alfena | Renovated | Balcony | Garage Space

2 bedroom apartment, renovated, with two solar fronts, providing natural light throughout the day. With a total area of 109 m², this property stands out for its quality finishes and is in impeccable condition, with no construction defects.

It is located in a residential and central area of Alfena, with a variety of shops, services, public transport and good access to the motorway.

Main features of the apartment:

- Large entrance hall with pantry, offering plenty of storage space.
- Living room with a generous area, with stove.

**Vanessa Sousa****+351 932 849 693 <sup>2</sup>**

vanessa.sousa@mmimoveis.pt

**T +351 933 298 913 <sup>2</sup> · E geral@mmimoveis.pt**  
**Estr. da Circunvalação 3846 Sala 7, 4435-183 Rio Tinto**  
**AMI 14355**

<sup>1</sup> (Call to national fixed network) | <sup>2</sup> (Call to national mobile network)



MM403/24ALF/VSI

Reference

Scan the QR code to view the property



- Fully equipped kitchen, namely, hob, oven, extractor fan, dishwasher, refrigerator, microwave. With laundry.

- In the private area, a large hall gives access to two bedrooms, both with built-in wardrobes, one of them with access to a balcony.

- Complete bathroom in its entirety, with tasteful materials, lacquered suspended furniture.

Of note are the high quality finishes, the impeccable condition of the property, air conditioning in the bedrooms, false ceilings with spotlights, alarm installation, piped gas, stove, security door.

In the basement, the apartment has a parking space, offering additional security.

Energy Certification – Class B-

Building with two elevators.

For more information and/or visit, please contact our team without obligation.

## Property Features

- Air conditioning
- Dishwashing machine
- Fitted wardrobes
- Balcony
- Garage
- Laundry
- Central location
- Energetic certification: B-
- Security door
- Equipped kitchen
- Laminated floor
- Proximity: Restaurants, Pharmacy, Public Transport, Schools
- Lift
- Pantry
- Views: Countryside views
- Quiet Location
- Video entry system



**Vanessa Sousa**

+351 932 849 693 <sup>2</sup>

vanessa.sousa@mmimoveis.pt

**T +351 933 298 913 <sup>2</sup> · E geral@mmimoveis.pt**  
**Estr. da Circunvalação 3846 Sala 7, 4435-183 Rio Tinto**  
**AMI 14355**

<sup>1</sup> (Call to national fixed network) | <sup>2</sup> (Call to national mobile network)