



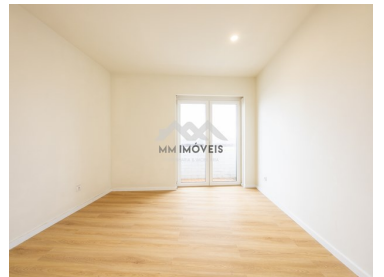
MM435/24LP/EAI

Reference

Scan the QR code to view the property




Matosinhos e Leça da Palmeira - Apartment



 2
Bedrooms

 2
Bathrooms

 82
Area (m²)


Garage

229 000 €
(EUR €)

1+1 Bedroom Apartment | Leça da Palmeira | Suite | Balcony | Garage | Lift

1+1 bedroom apartment, on the 3rd floor, in the final stages of refurbishment, with a solar front, very bright and fluid, with a great location, next to the Mercadona Supermarket, with easy access to the city center, beach and the Expressway

This property offers a living room in Open Space, with equipped kitchen, a suite with balcony and wardrobe, interior bedroom that can be an office/playroom, or even open to give more dimension to the living room, service toilet,

Excellent business opportunity for own housing or rental market.

For more information and/or visits please contact our team.

Condominium fee: 52,34€



Edgardo Almeida

+351 919 803 003 ²

edgardo.almeida@mmimoveis.pt

T +351 933 298 913 ² · E geral@mmimoveis.pt
Estr. da Circunvalação 3846 Sala 7, 4435-183 Rio Tinto
AMI 14355

¹ (Call to national fixed network) | ² (Call to national mobile network)



MM435/24LP/EAI

Reference

Scan the QR code to view the property



Energy Rating: D

Property Features

- Heating
- Laminated floor
- Proximity: Airport, Beach, Shopping, Restaurants, City, Pharmacy, Public Transport, Schools
- Balcony
- Electric shutters
- Garage
- Electric garage gate
- Views: City view
- Solar orientation: East
- Equipped kitchen
- Fitted wardrobes
- Renovation year: 2022
- Double glazing
- Lift
- Garage Spaces: 1
- Kitchenette
- Quiet Location
- Energetic certification: D



Edgardo Almeida

+351 919 803 003 ²

edgardo.almeida@mmimoveis.pt

T +351 933 298 913 ² · E geral@mmimoveis.pt
Estr. da Circunvalação 3846 Sala 7, 4435-183 Rio Tinto
AMI 14355

¹ (Call to national fixed network) | ² (Call to national mobile network)