



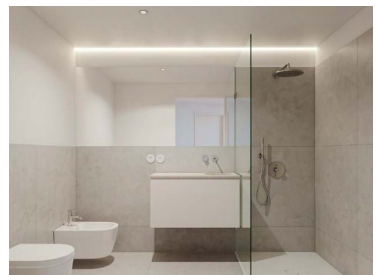
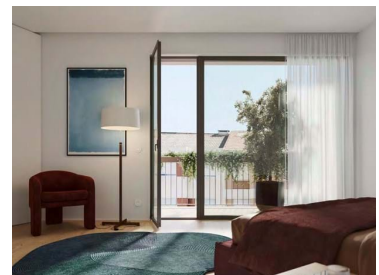
MM373.AC/24PRT/AMI


Reference


Scan the QR code to view the property





## Bonfim - Apartment



 **2**  
Bedrooms

 **2**  
Bathrooms

 **100**  
Area (m<sup>2</sup>)

  
Garage

**370 000 €**  
(EUR €)

## 2 Bedroom Apartment | New Construction | Balcony | Garage | Bonfim

Two-front 2 bedroom apartment (South North) with terrace accessible from the living room and the suite. Parking space and storage.

Located in one of the most fashionable neighborhoods of Porto, close to the historic center and downtown, this development stands out for being located in a residential area that has undergone a major transformation. The area is characterized by the presence of local shops, restaurants and a strong demand by young people and foreigners, attracted by the location, the excellent transport network and the artistic influence of the surroundings, such as the School of Fine Arts and the Soares dos Reis School.

The project includes 38 apartments of typologies T0, T1, T2 and T3, spread over six floors, many of them with balconies and/or terraces, providing a perfect combination of comfort, functionality and



**Ana Meneses**

+351 919 365 958 <sup>2</sup>  
ana.meneses@mmimoveis.pt

**T +351 933 298 913 <sup>2</sup> · E geral@mmimoveis.pt**  
**Estr. da Circunvalação 3846 Sala 7, 4435-183 Rio Tinto**  
**AMI 14355**

<sup>1</sup> (Call to national fixed network) | <sup>2</sup> (Call to national mobile network)



MM373.AC/24PRT/AMI

Reference

Scan the QR code to view the property



modern design.

All apartments include a parking space and storage room, spread over two basements, ensuring greater comfort and storage space.

Located next to Bonfim Church, the development is just a 10-minute walk from the Campo 24 de Agosto metro station and the new Campanhã Intermodal Terminal, which offers connections via metro, train and the express bus network. Rua do Bonfim is also an important crossing point for several bus lines that have the Bolhão Market as their final destination.

The completion of the work is scheduled for June 2026.

## Property Features

- Air conditioning
- Equipped kitchen
- Proximity: Shopping, Restaurants, Hospital, Pharmacy, Public Transport, Schools, Public Swimming Pools
- Built year: 2026
- Private condominium
- Terrace
- Electric shutters
- Garage
- Views: City view
- Energetic certification: A
- Adapted for wheelchair use
- Heat pump
- Fitted wardrobes
- Access to people with mobility difficulties
- Floors: 1
- With outdoor area
- Double glazing
- Lift
- Electric garage gate
- Central location
- Adapted exterior access to the house



**Ana Meneses**

+351 919 365 958 <sup>2</sup>  
ana.meneses@mmimoveis.pt

**T +351 933 298 913 <sup>2</sup> · E geral@mmimoveis.pt**  
**Estr. da Circunvalação 3846 Sala 7, 4435-183 Rio Tinto**  
**AMI 14355**

<sup>1</sup> (Call to national fixed network) | <sup>2</sup> (Call to national mobile network)