



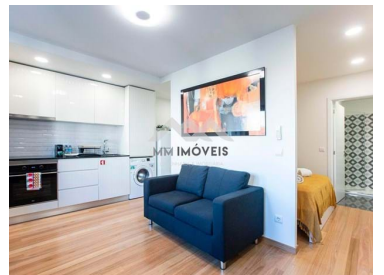
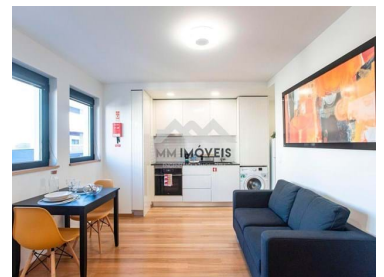
MM006/25PRT/AMI

Reference

Scan the QR code to view the property



## Cedofeita, Santo Ildefonso, Sé, Miragaia, São Nicolau e Vitória - Apartment



1

Bathrooms



47

Area (m²)

**900 € / Month**

(EUR €)

### Apartment T0 | Leasehold | New| Furnished | Equipped | Constitution | Harbor

Apartment T0 as new, from 2021. A large space that houses a living room, open space kitchen, a sleeping area separated by a wall and a full bathroom.

The apartment is furnished and equipped.

A location well served by several commercial and service establishments. Nearby are supermarkets such as Pingo Doce Marquês, pharmacies, restaurants and confectioneries.

There are several health institutions in the immediate vicinity (Santa Maria Hospital, ISão João

**Ana Meneses**+351 919 365 958 <sup>2</sup>

ana.meneses@mmimoveis.pt

**T +351 933 298 913 <sup>2</sup> · E geral@mmimoveis.pt**  
**Estr. da Circunvalação 3846 Sala 7, 4435-183 Rio Tinto**  
**AMI 14355**

<sup>1</sup> (Call to national fixed network) | <sup>2</sup> (Call to national mobile network)



MM006/25PRT/AMI

Reference

Scan the QR code to view the property



Hospital). There are also several schools and educational institutions, of different levels (Covelo Primary School, Filipa de Vilhena Secondary School, Externato Ribadouro, EB2/3 School of Paranhos and Asperela University Campus).

On Rua Faria de Guimarães, next to Jardim do Marquês and Quinta do Covelo. With quick access to the main roads, such as the VCI, A1 and A3, making it easy to travel to other areas of the city and the country. Area served by public transport, very close to the Marquês Metro Station.

## Property Features

- Air conditioning
- Equipped kitchen
- Washing machine
- Proximity: Shopping, Restaurants, City, Hospital, Pharmacy, Public Transport, Schools, Public Swimming Pools
- Built year: 2021
- Double glazing
- Lift
- Views: City view
- Solar orientation: West
- Energetic certification: B
- Security door
- Adapted for wheelchair use
- Thermoaccumulator
- Dishwashing machine
- Fitted wardrobes
- Access to people with mobility difficulties
- Floors: 1
- Electric shutters
- Laundry
- Central location
- Orientation: Exterior
- Video entry system
- Adapted exterior access to the house



**Ana Meneses**

+351 919 365 958 <sup>2</sup>

ana.meneses@mmimoveis.pt

**T +351 933 298 913 <sup>2</sup> · E geral@mmimoveis.pt**  
**Estr. da Circunvalação 3846 Sala 7, 4435-183 Rio Tinto**  
**AMI 14355**

<sup>1</sup> (Call to national fixed network) | <sup>2</sup> (Call to national mobile network)