



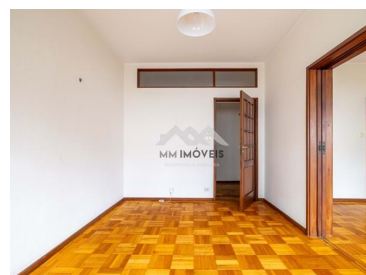
MM010/25PRT/AMI

Reference

Scan the QR code to view the property



## Bonfim - Apartment



3

Bedrooms



2

Bathrooms



130

Area (m<sup>2</sup>)**1 500 € / Month**

(EUR €)

### 3+1 Bedroom Apartment | Leasehold | Balcony | Equipped | Rua da Alegria | Marquis

A 3+1 bedroom apartment with a large living room with balcony. The kitchen is furnished and equipped with a stove, fridge and extractor fan. Large laundry room with washing machine. Larder cabinet. Room +1 is in the service area.

The bedroom area has three bedrooms and two full bathrooms. All bedrooms have wardrobes

A location well served by several commercial and service establishments. Nearby are supermarkets such as Pingo Doce Marquês, pharmacies, restaurants and confectioneries.

In the vicinity there are several health institutions (Santa Maria Hospital, São João Hospital). There are also several schools and educational institutions, of different levels (Colégio Nossa Senhora da

**Ana Meneses**+351 919 365 958 <sup>2</sup>

ana.meneses@mmimoveis.pt

**T +351 933 298 913 <sup>2</sup> · E geral@mmimoveis.pt**  
**Estr. da Circunvalação 3846 Sala 7, 4435-183 Rio Tinto**  
**AMI 14355**

<sup>1</sup> (Call to national fixed network) | <sup>2</sup> (Call to national mobile network)



MM010/25PRT/AMI

Reference

Scan the QR code to view the property



Paz, Escola Secundária Aurélia de Sousa, Externato Ribadouro, Escola Superior de Educação Paula Francinetti)

On Rua da Alegria, next to Jardim do Marquês. With quick access to the main roads, such as the VCI, A1 and A3, making it easy to travel to other areas of the city and the country. Area served by public transport, very close to the Marquês Metro Station

## Property Features

- Thermoaccumulator
- Washing machine
- Fitted wardrobes
- Built year: 1964
- Floors: 1
- Balcony
- Lift
- Laundry
- Central location
- Equipped kitchen
- Wooden floor
- Proximity: Shopping, Restaurants, City, Hospital, Pharmacy, Public Transport, Schools, Playground
- Renovation year: 2020
- With outdoor area
- Double glazing
- Pantry
- Views: City view



**Ana Meneses**

+351 919 365 958 <sup>2</sup>

ana.meneses@mmimoveis.pt

**T +351 933 298 913 <sup>2</sup> · E geral@mmimoveis.pt**  
**Estr. da Circunvalação 3846 Sala 7, 4435-183 Rio Tinto**  
**AMI 14355**

<sup>1</sup> (Call to national fixed network) | <sup>2</sup> (Call to national mobile network)