



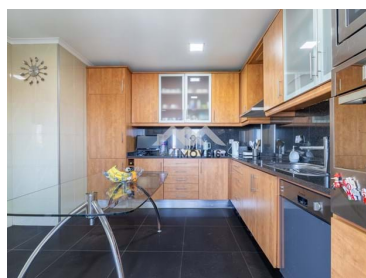
MM213/25RAM/EAI

Reference

Scan the QR code to view the property



Ramalde - Apartment



3

Bedrooms



2

Bathrooms



146

Area (m²)

Garage

390 000 €

(EUR €)

3 Bedroom Apartment | Antunes Guimarães | Balconies | Garage | Lift

Property of typology 3, located at av. Dr. Antunes de Guimarães, with 2 solar fronts, without construction and/or maintenance defects, extremely bright and spacious.

With a very intelligent division of spaces, this property, partially renovated, offers a large entrance hall, 3 bedrooms, all with wardrobes, large living room with access to a balcony, a renovated equipped kitchen and service toilet.

Renovated kitchen, garage, storage, balconies, are just some of the comfort items of the property in question.

With an exceptional location, it offers all kinds of services and commerce in the vicinity, easy and quick access to the INATEL Sports Park, NorteShopping, City Park, Serralves Park, Foz and Via

**Edgardo Almeida**+351 919 803 003 ²

edgardo.almeida@mmimoveis.pt

T +351 933 298 913 ² · E geral@mmimoveis.pt
Estr. da Circunvalação 3846 Sala 7, 4435-183 Rio Tinto
AMI 14355

¹ (Call to national fixed network) | ² (Call to national mobile network)



MM213/25RAM/EAI

Reference

Scan the QR code to view the property



Rápida.

Excellent business opportunity, for permanent housing or rental market.

Property Features

- Thermoaccumulator
- Dishwashing machine
- Fitted wardrobes
- Access to people with mobility difficulties
- Renovation year: 2005
- With outdoor area
- Double glazing
- Garage
- Electric garage gate
- Conservatory
- Central location
- Energetic certification: C
- Adapted for wheelchair use
- Equipped kitchen
- Wooden floor
- Proximity: Shopping, Restaurants, Hospital, Pharmacy, Public Transport, Schools
- Built year: 1988
- Floors: 1
- Balcony
- Lift
- Garage Spaces: 1
- Laundry
- Views: City view
- Solar orientation: North, South
- Basement



Edgardo Almeida

+351 919 803 003 ²

edgardo.almeida@mmimoveis.pt

T +351 933 298 913 ² · E geral@mmimoveis.pt
Estr. da Circunvalação 3846 Sala 7, 4435-183 Rio Tinto
AMI 14355

¹ (Call to national fixed network) | ² (Call to national mobile network)